

Phyllis Coulter MBACP

Senior Accred CYP & Supervision

BACP Cyp Conference 24th February 2018
Seminar

Making connection with an autistic brain



What will we do?

- Introduction
- Neuroscience
- Application
- Care
- Questions



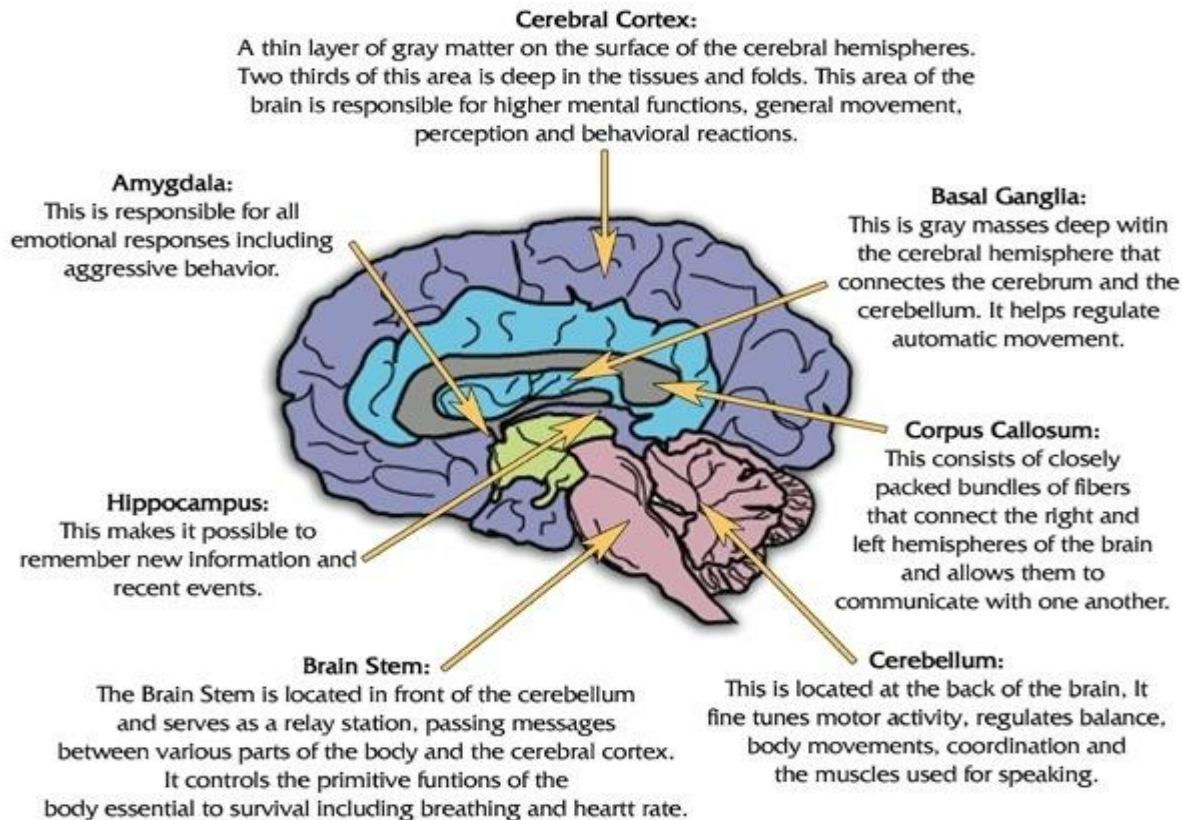
A definition

With onset in the first years of life, autism presents as a disorder of profound social disconnect rooted in early brain development. A child with autism may appear unaware of his surroundings. He may also fail to respond to the sights and sounds of a social world. Often, with limited speech and language skills, the child follows a different development pattern compared to other children in the same age group. He has difficulty playing with other children and making friends. Alone, the child engages in restricted, repetitive behaviour that is hard to understand.

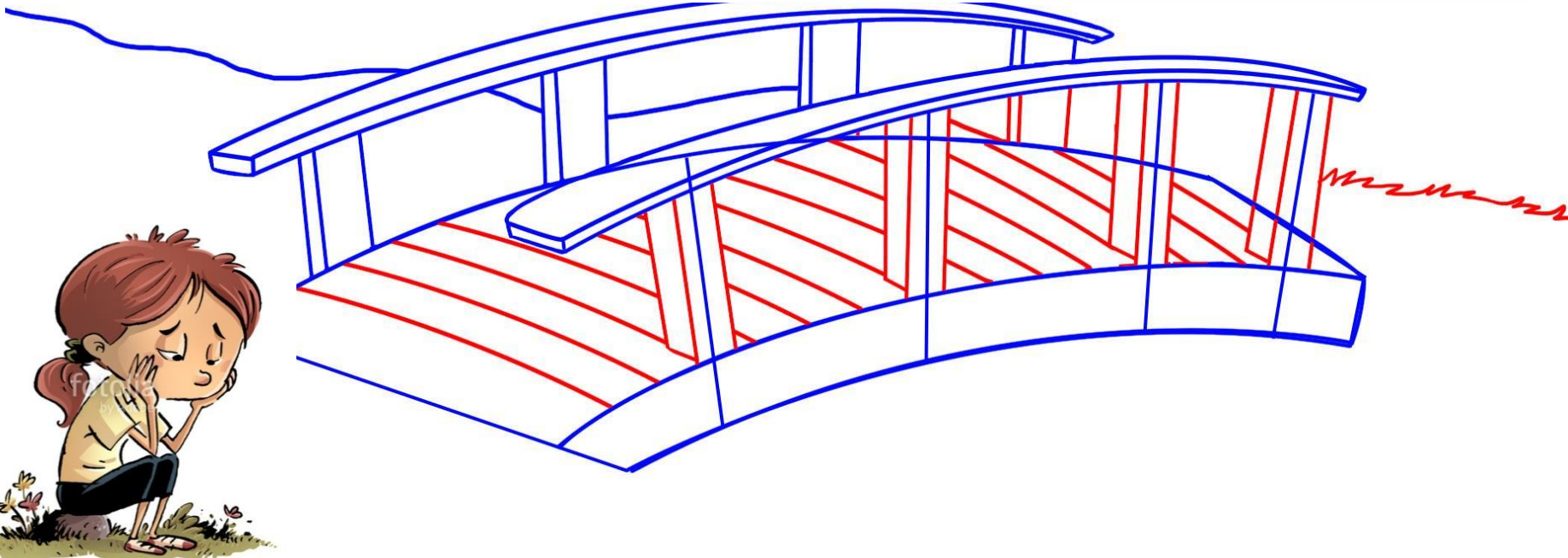
DSM-V ASD Criteria (299.00)

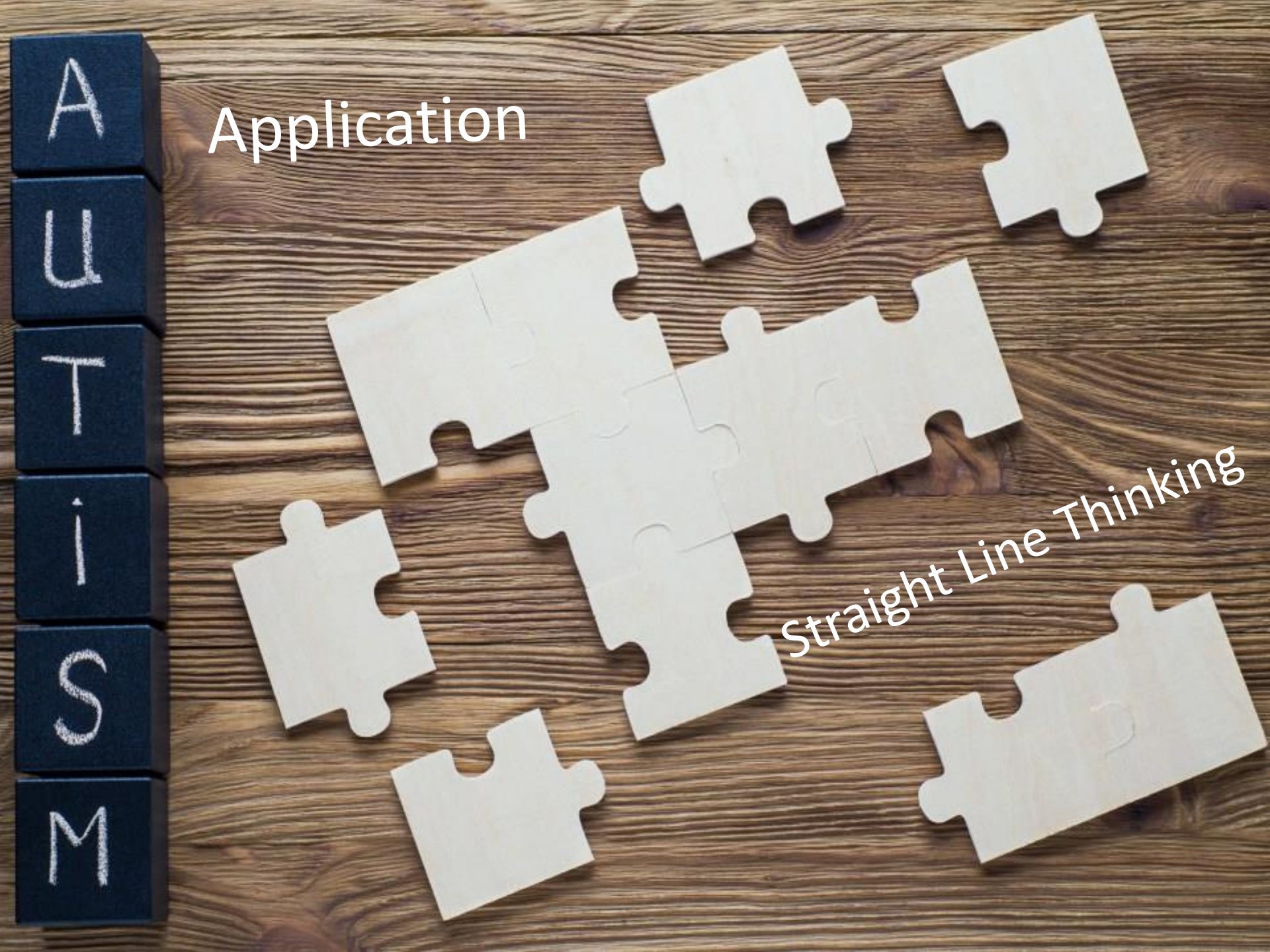
- B. Restricted, repetitive patterns of behavior, interests, or activities, as manifested by at least two of the following, currently or by history (Not Exhaustive).
 1. Stereotyped or repetitive motor movements, use of objects, or speech (e.g., simple motor stereotypes, lining up toys or flipping objects, echolalia, idiosyncratic phrases).
 2. Insistence on sameness, inflexible adherence to routines, or ritualized patterns of verbal or nonverbal behavior. (e.g., extreme distress at small changes, difficulties with transitions, rigid thinking patterns, greeting rituals, need to take same route or eat same food every day).
 3. Highly Restricted, fixated interests that are abnormal in intensity or focus (e.g., strong attachment to or preoccupation with unusual objects, excessively circumscribed or perseverative interests).
 4. Hyper- or hyporeactivity to sensory input or unusual interest in sensory aspects of the environment (e.g., apparent indifference to pain/temperature, adverse response to specific sounds or textures, excessive smelling or touching of objects, visual fascination with lights or movement).

Parts of the Brain Affected by Autism



What needs to
happen here
and why?



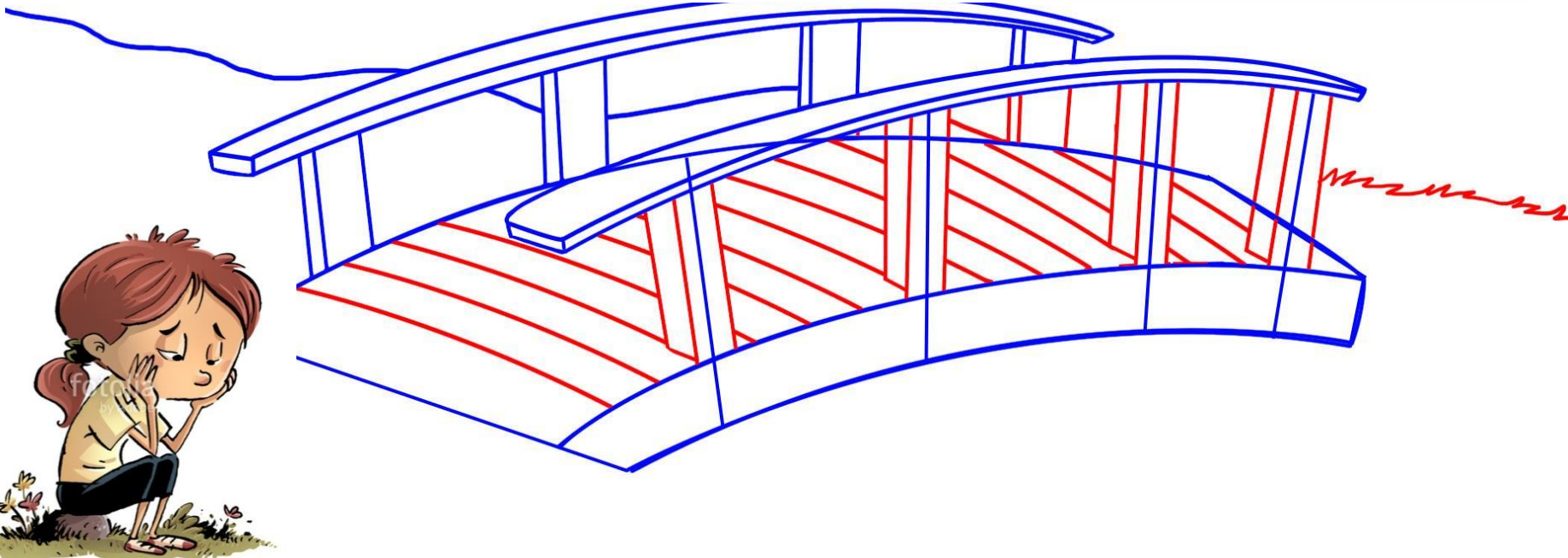


Application

Straight Line Thinking

A
U
T
I
S
M

What needs to
happen here
and why?



Care

- Law
- Supervision
- Realism
- Balance



GOALS



Helpful articles

- Elsevier: Research in Autism Spectrum Disorders
- Journal of Autism and Developmental Disorders
- Simon Baron-Cohen
- Mindspec.org

<https://autismum.com/2012/05/07/10-tips-on-how-to-communicate-with-autistic-people/>

